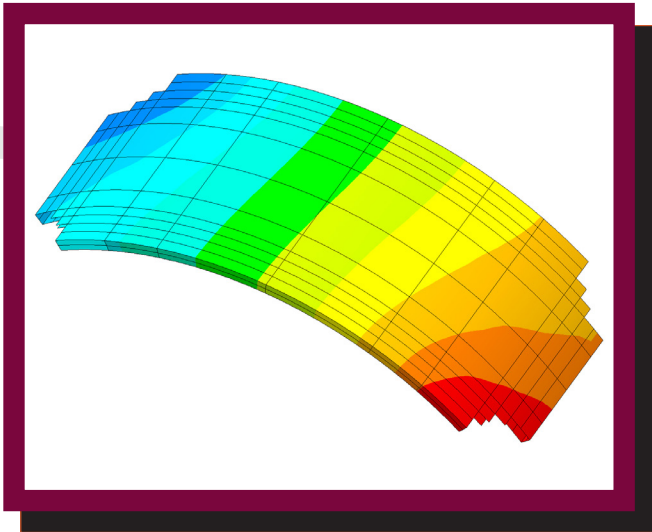
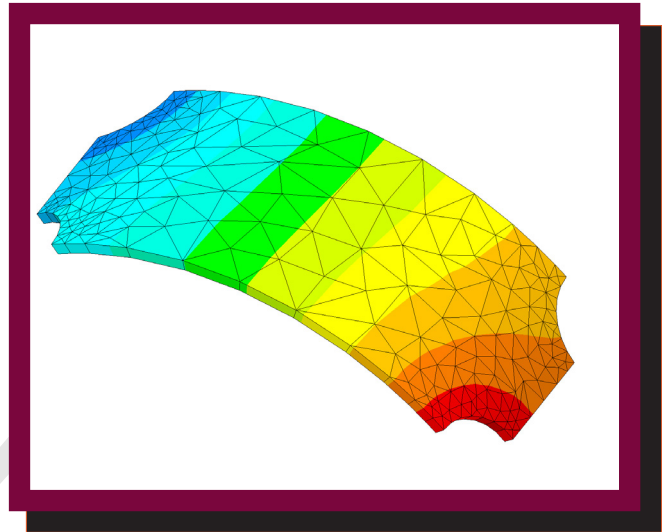




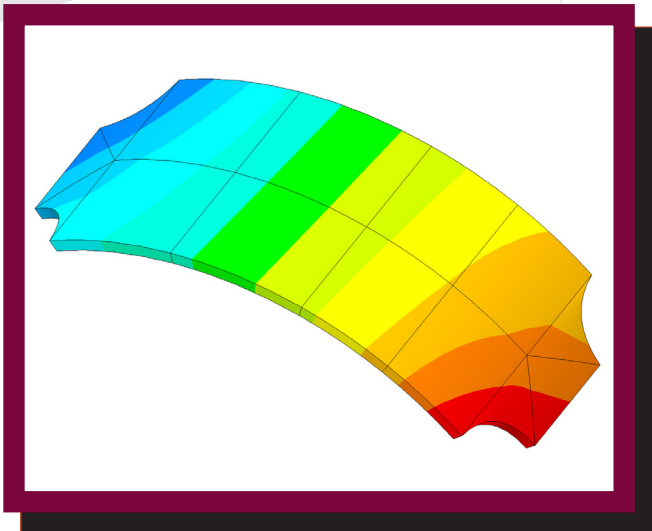
C&R TECHNOLOGIES®



Finite Differences struggle with arbitrary geometry.



Traditional structural Finite Elements are overkill for a thermal model.



TD Direct's Curved Thermal Elements ...



... Now *that's* the ticket!

Surface and volume accuracy in a system-level mesh.

www.crtech.com

C&R TECHNOLOGIES®

Phone 303.971.0292

Facsimile 303.971.0035

Hot Engineering ... Cool Software®